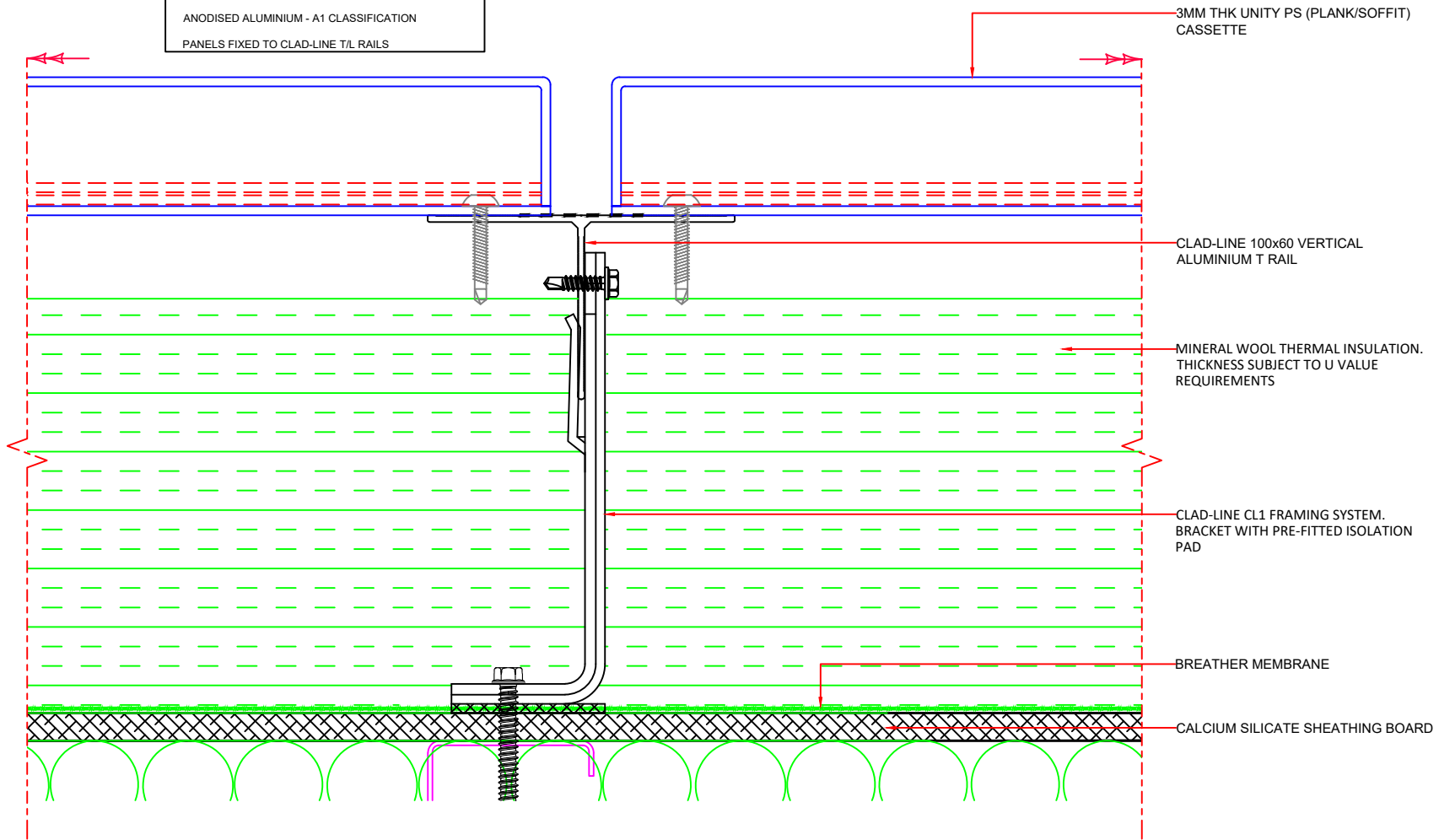


3MM THK UNITY PS (PLANK/SOFFIT) CASSETTE PANELS  
 PPC FINISH ALUMINIUM - A2-S1,D0 CLASSIFICATION  
 PRE-COAT ALUMINIUM - A1 CLASSIFICATION  
 ANODISED ALUMINIUM - A1 CLASSIFICATION  
 PANELS FIXED TO CLAD-LINE T/L RAILS



3MM THK UNITY PS (PLANK/SOFFIT) CASSETTE

CLAD-LINE 100x60 VERTICAL ALUMINIUM T RAIL

MINERAL WOOL THERMAL INSULATION. THICKNESS SUBJECT TO U VALUE REQUIREMENTS

CLAD-LINE CL1 FRAMING SYSTEM. BRACKET WITH PRE-FITTED ISOLATION PAD

BREATHER MEMBRANE

CALCIUM SILICATE SHEATHING BOARD

**DO NOT SCALE**

1. ANY DISSIMILAR METALS TO BE ISOLATED WITH BARRIER TAPE.
2. ANY DOUBT OF THE CONTENTS OF THIS DRAWING PLEASE CONTACT THE DESIGN OFFICE
3. THIS DRAWING TO BE READ IN CONJUNCTION WITH ALL OTHER CONTRACT DRAWINGS.
4. ENSURE THAT ALL STEELWORK AND ANY TIMBERWORK IS CHECKED PRIOR TO THE COMMENCEMENT OF OUR WORKS.
5. UNLESS OTHERWISE STATED, ALL FIXINGS TO BE AT 450mm CENTRES.
6. THIS DRAWING MUST NOT BE COPIED OR REPLICATED WITHOUT WRITTEN PERMISSION FROM METALLINE SERVICES LTD.
7. ALL DIMENSIONS MUST BE CHECKED ON SITE AND ANY DISCREPANCIES REPORTED TO METALLINE SERVICES LTD PRIOR TO COMMENCEMENT OF WORKS



Metalline Architectural Fabrications  
 Hollies Park Road,  
 Cannock,  
 Staffordshire,  
 WS11 1DB  
[www.metalline.co.uk](http://www.metalline.co.uk)  
 Tel: +44 (0) 1543 456930

DRAWING TITLE		-	-	-	-	-
UNITY PS PANEL SYSTEM VERTICAL JOINT DETAIL		-	-	-	-	-
DATE	SCALE	-	-	-	-	-
2/1/24	NTS	-	-	-	-	-
DRAWN	CHECKED	-	-	-	-	-
CB	DB	-	-	-	-	-
DRAWING No.	REVISION	REV	BY	DESCRIPTION	DATE	CHK'D
UA2-PSCL-T01	-	-	-	-	-	-