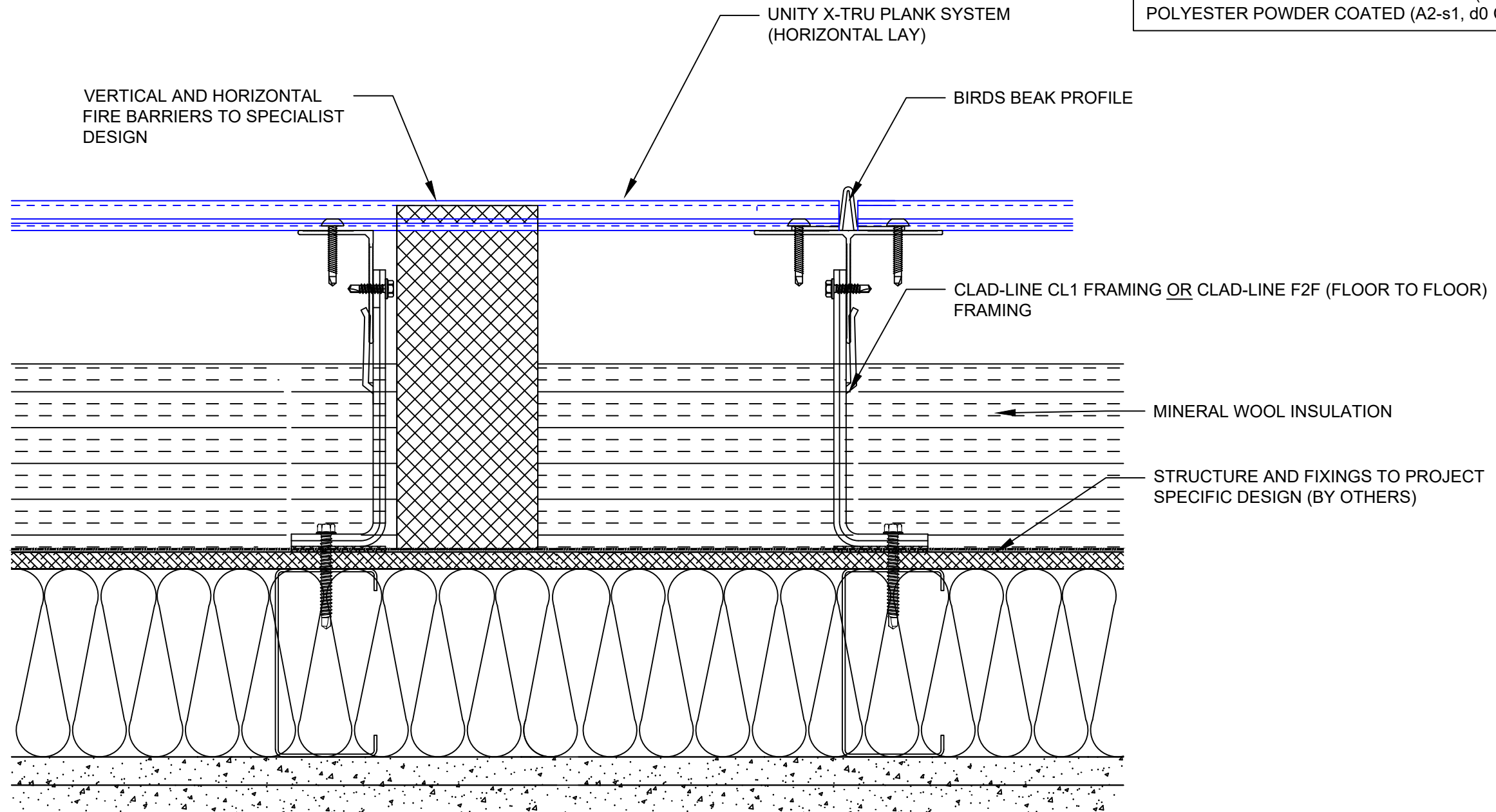


AVAILABLE WITH AN ANODISED FINISH (A1 CLASSIFICATION) OR POLYESTER POWDER COATED (A2-s1, d0 CLASSIFICATION)



UNITY X-TRU
TYPICAL VERTICAL JOINT DETAIL
(HORIZONTAL PLANK)

Metalline Architectural Fabrications
 Hollies Park Road,
 Cannock,
 Staffordshire,
 WS11 1DB
www.metalline.co.uk
 Tel: +44 (0) 1543 456930

DO NOT SCALE

1. ANY DOUBT OF THE CONTENTS OF THIS DRAWING PLEASE CONTACT THE DESIGN OFFICE.
2. THIS DRAWING TO BE READ IN CONJUNCTION WITH ALL OTHER CONTRACT DRAWINGS.
3. DO NOT REPRODUCE THIS DRAWING (IN FULL OR PART) WITHOUT THE WRITTEN PERMISSION OF METALLINE (SERVICES) LTD
4. COPYRIGHT METALLINE (SERVICES) LTD 2020



DRAWING TITLE		-	-	-	-	-
UNITY X-TRU TYPICAL DETAILS HORIZONTAL PLANK VERTICAL JOINT DETAIL		-	-	-	-	-
DATE	SCALE	-	-	-	-	-
23/07/22	NTS	-	-	-	-	-
DRAWN	CHECKED	-	-	-	-	-
CB		-	-	-	-	-
DRAWING No.	REVISION	REV	BY	DESCRIPTION	DATE	CHKD
ML-XTRU-D01C						