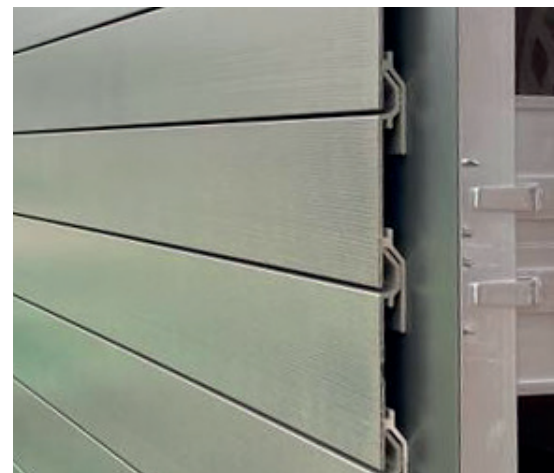
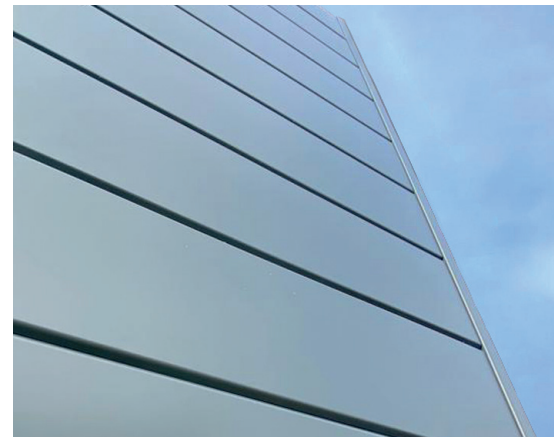


UNITY **X-TRU**
Extruded Plank System

Technical Data Sheet



www.metalline.co.uk
+44 (0)1543 456 930
sales@metalline.co.uk



METALLINE[®]
ARCHITECTURAL FABRICATIONS

Unity A2 X-TRU (Extruded Plank) Aluminium Rainscreen

An A2-rated aluminium extruded plank system carried by aluminium support structure.

General

Shape	Rectangle Plank
Finish	Polyester Powder coated
Material	Aluminium 6063 T6
CAWS	H92/120 Rainscreen cladding
Fire classification (EN 13501-1)	Class A2
Recyclability	100%
Recycled content	50%

Dimensions

PART	WIDTH	LENGTH	THICKNESS
100mm Module	136mm Overall (90mm face)	3000/6000mm	2.5mm
150mm Module	186mm Overall (140mm face)	3000/6000mm	2.5mm
Starter Clip	56mm	3000/6000mm	2.5mm
End Clip	48mm	3000/6000mm	2.5mm

Custom sizes are available - Please speak to the Metalline Team

Weight

PART	WEIGHT (KG/M)
100mm Module	1.299kg/m
150mm Module	1.613kg/m
Starter Clip	0.66 kg/m
End Clip	0.517 kg/m

Technical Data

PHYSICAL PROPERTY	VALUE
Density	2.70 G/CM ³
Melting Property	655 °C
Thermal Expansion	23.5 x10 ⁻⁶ /K
Modulus of Elasticity	69.5 GPA
Thermal Conductivity	201 W / MK
Electrical Resistivity	0.033 x10 ⁻⁶ Ω M
Tensile Strength	215 MIN MPA
Proof Stress	170 MIN MPA
Hardness Brinell	75 HB